

SUPER SLIM RANGE

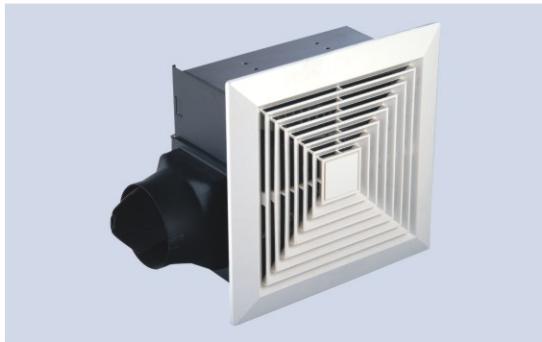
■ PRODUCT



TUB215
FULL METAL



TUB18M
FULL METAL



TUB18
PLASTIC SIROCCO FAN VANE



TUB25
PLASTIC SIROCCO FAN VANE

SUPER SLIM RANGE

■ DESCRIPTION

- The fans are specially designed with super slim casing and compact structure for limited ceiling space installation



TUB215



TUB18M



TUB18
TUB25

CASING

- super slim compact design of 125-135mm thickness for small installation space
- welding joint design for durable and aesthetical needs
- fire retardant full metal construction and anti-rust coating processed

METAL SIROCCO FAN (TUB215, TUB18M)

- well balanced, high graded aluminum high pressure forward curved centrifugal fan
- quiet and stable operation

MOTOR

- capacitor run induction motor with lower input power, high performance, long durability and reliability

DETACHABLE CASSETTE TYPE DISCHARGE OPENING

- convenient for ducting, installation and maintenance

LOUVER

- various aesthetically pleasing design for selection
- easy to install / remove clips
(Refer to Page 39 & Page 40 louver selection for tubular sirocco fan)

MOUNTING FEET

- for easy suspending and ceiling installation

BACK DRAFT SHUTTER

PLASTIC SIROCCO FAN (TUB18, TUB25)

- well balanced plastic forward curved centrifugal fan
- quiet and stable operation

SUPER SLIM RANGE

■ SPECIFICATIONS

Model	Size Dia(sirocco fan) in/mm	Volt/Hz	Input Power W	Speed R.P.M.	Air Volume* m ³ /min	Air Pressure# Pa	Sound Level dB(A)
TUB215	6.8/170	220V~50Hz	39	960	4.5	150	42
TUB18M	4/100	220V~50Hz	30	1120	1.8	130	39
TUB18	4/100	220V~50Hz	30	1150	1.8	160	39
TUB25	6/150	220V~50Hz	40	980	2.6	175	42

*Maximum air volume at free flow condition

#Maximum air pressure at zero flow condition

■ PERFORMANCE CURVE

