

FULL METAL IN-LINE FAN

■ PRODUCT



MSF10 MSF12 MSF15
MSF18-6 MSF18-8 MSF20-12

■ DESCRIPTION

FULL METAL IN-LINE MINI SIROCCO FAN WITH INTERNAL ROTOR MOTOR

CASING

- compact size for small installation space



SIROCCO FAN

- well balanced aluminum high pressure forward curved centrifugal fan
- quiet and stable operation

MOTOR

- capacitor run induction motor with lower input power, long durability and reliability
- high performance
- Internal rotor motor

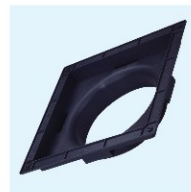
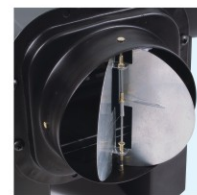
EASY INSTALLATION

- inlet and outlet are the same size for easy connection to a ducted system
- can be installed on the wall, floor and ceiling
- various installation patterns

WIDE RANGE OF AIR VOLUME AND AIR PRESSURE FOR SELECTION



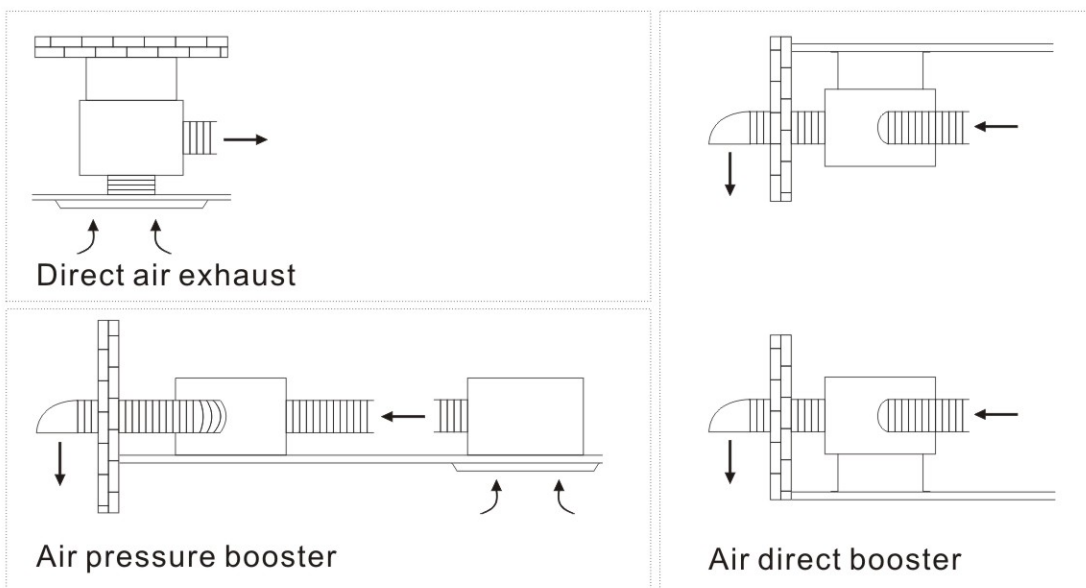
BACK DRAFT SHUTTER



SPIGOT (OPTIONAL)

FULL METAL IN-LINE FAN

MULTI-FUNCTION



VARIOUS INSTALLATION PATTERNS

- well designed to satisfy different installation space, location and adjustable outlet direction to fit vertical or horizontal position

