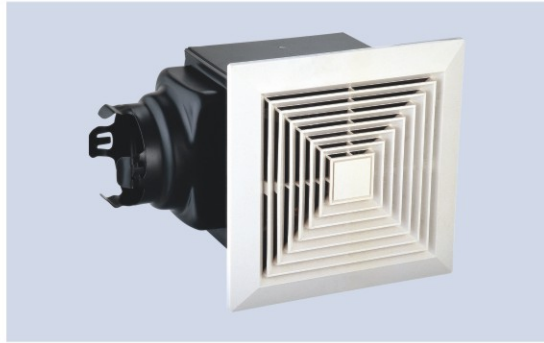
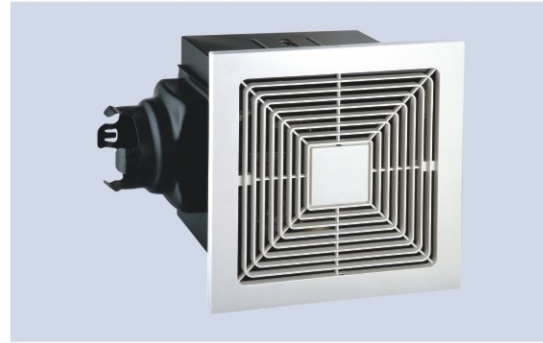


FULL CASED RANGE

■ PRODUCT



TUB17



TUB24

■ DESCRIPTION

- The fans are specially designed for medium air exhaust volume requirement in premises

CASING

- metal casing with anti-rust coating

SIROCCO FAN

- well balanced plastic forward curved centrifugal fan
- quiet and stable operation

MOTOR

- capacitor run induction motor with lower input power, high performance, long durability and reliability

DETACHABLE CASSETTE TYPE DISCHARGE OPENING

- convenient for ducting, installation and maintenance

LOUVER

- various aesthetically pleasing design for selection
- easy to install / remove clips
(Refer to Page 49 & Page 50 louver selection for tubular sirocco fan)

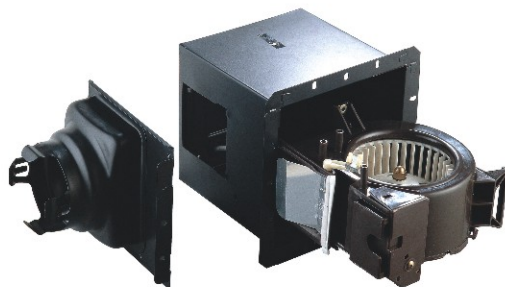
MOUNTING FEET

- easy suspending & ceiling installation

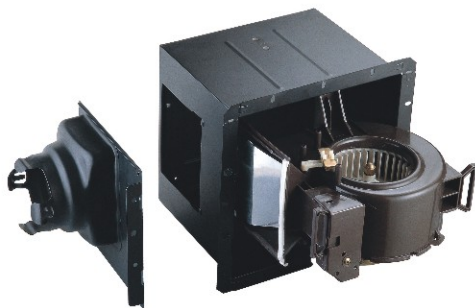
BACK DRAFT SHUTTER

DETACHABLE SCROLL & SIROCCO FAN & MOTOR

- convenient for installation, maintenance and replacement



TUB17



TUB24

FULL CASED RANGE

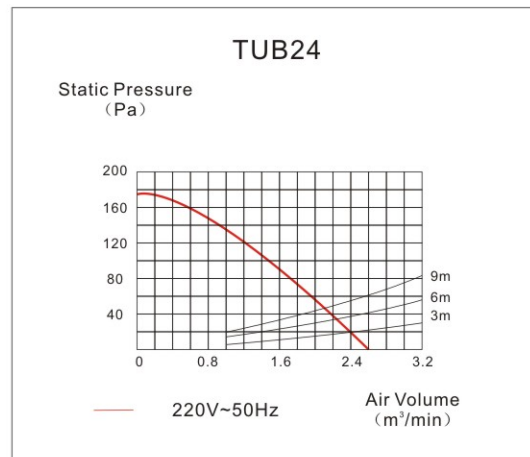
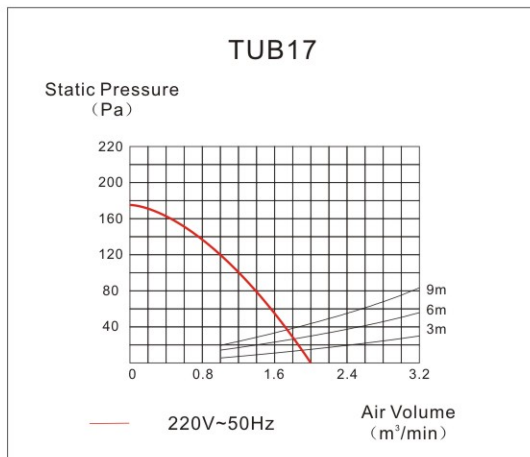
SPECIFICATIONS

Model	Size Dia(sirocco fan) in/mm	Volt/Hz	Input Power W	Speed R.P.M.	Air Volume* m ³ /min	Air Pressure# Pa	Sound Level dB(A)
TUB17	4.8/120	220V~50Hz	25	1250	2	170	32
TUB24	4.8/120	220V~50Hz	34	1080	2.6	170	37

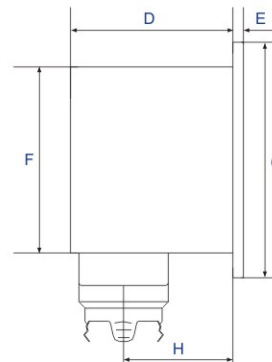
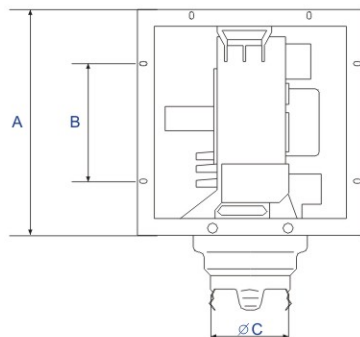
*Maximum air volume at free flow condition

#Maximum air pressure at zero flow condition

PERFORMANCE CURVE



DIMENSIONS (mm)



TUB17 TUB24

Model	A	B	C	D	E	F	G	H	Applicable Duct ∅	Installation Space mm	Applicable Area m ²
TUB17	210	84	97	180	13	170	230	129	100	176×176	8~12
TUB24	270	140	97	195	13	230	290	138	100	237×237	15~20