

# AIR CURTAIN

## PRODUCT



FM15-series



FM19-series

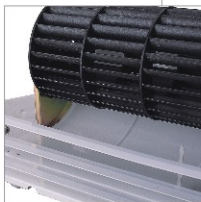
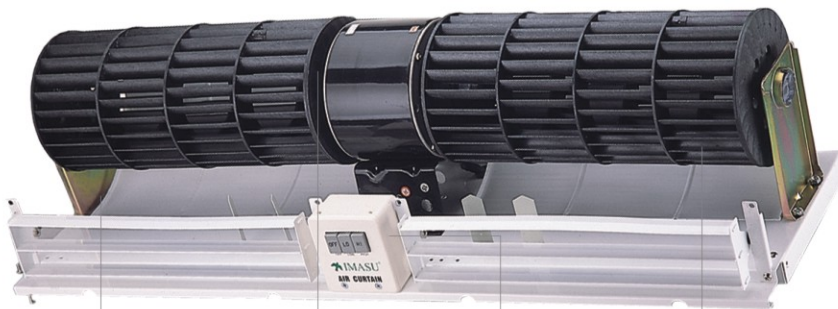


FM16-series



RM19-series

## DESCRIPTION



**ADJUSTABLE AIR DEFLECTION VENTS**



**MOTORS**

- high performance
- built-in thermal cut-out protection



**PUSH BUTTON SWITCH**

- 2-speed or 3-speed control



**SIROCCO FAN**

- high air velocity
- quiet operation



**REMOTE CONTROL**

- remote control & light touch switch

## ■ SPECIFICATIONS

Model	Size/(Length) mm	Volt/Hz	Speed Regulation	Input Power W	Current A	Outlet Air Velocity m/s	Speed R.P.M	Air Volume (m <sup>3</sup> /h)	Sound Level dB(A)
<b>FM1506 / FM1506RC</b>	600	220/50	HI	150	0.87	13	1230	1480	53
<b>FM1606 / FM1606RC</b>			LO	115	0.53	10	990	1260	50
<b>FM1509 / FM1509RC</b>	900	220/50	HI	200	0.91	13.5	1089	2400	54
<b>FM1609 / FM1609RC</b>			LO	170	0.78	10.5	943	2040	51
<b>FM1512 / FM1512RC</b>	1200	220/50	HI	335	1.53	14	1100	3380	57
<b>FM1612 / FM1612RC</b>			LO	295	1.34	11	976	2870	53
<b>FM1515 / FM1515RC</b>	1500	220/50	HI	360	1.64	14	1080	4620	60
<b>FM1615 / FM1615RC</b>			LO	330	1.51	11	956	3930	56
<b>FM1909 / FM1909RC</b>	900	200/60	HI	140	0.64	12	1500	1240	65
			ME	125	0.56	10	1300	1130	62
			LO	115	0.54	8	1100	1000	59
<b>FM1910 / FM1910RC</b>	1000	200/60	HI	158	0.73	12	1500	1470	65
			ME	140	0.64	10	1300	1300	62
			LO	135	0.6	8	1100	1100	59
<b>FM1912 / FM1912RC</b>	1200	200/60	HI	160	0.75	12	1500	1730	65
			ME	145	0.66	10	1300	1540	62
			LO	138	0.61	8	1100	1370	59
<b>FM1915 / FM1915RC</b>	1500	200/60	HI	248	1.13	12	1500	2250	65
			ME	240	1.09	10	1300	1940	62
			LO	230	1.05	8	1100	1640	59
<b>RM1909 / RM1909RC</b>	900	380/60	HI	6200	9	7.6	1600	930	61
			ME	6200	9	6.8	1500	860	59
			LO	6100	9	6.3	1400	800	57
<b>RM1910 / RM1910RC</b>	1000	380/60	HI	7200	10	7.5	1600	1050	62
			ME	7200	10	7	1500	990	60
			LO	7200	10	6.4	1400	960	57
<b>RM1912 / RM1912RC</b>	1200	380/60	HI	7400	11	7.7	1600	1300	63
			ME	7400	11	7.2	1500	1200	61
			LO	7400	11	6.7	1400	1110	59
<b>RM1915 / RM1915RC</b>	1500	380/60	HI	9200	13	7.6	1600	1690	63
			ME	9200	13	7.4	1500	1560	61
			LO	9200	13	6.7	1400	1480	59