

# FULL METAL IN-LINE FAN

## ■ PRODUCT



MSF10      MSF12      MSF15  
MSF18-6   MSF18-8   MSF20-12

## ■ DESCRIPTION

FULL METAL IN-LINE MINI SIROCCO FAN WITH INTERNAL ROTOR MOTOR

### CASING

- compact size for small installation space



### SIROCCO FAN

- well balanced aluminum high pressure forward curved centrifugal fan
- quiet and stable operation

### MOTOR

- capacitor run induction motor with lower input power, long durability and reliability
- high performance
- Internal rotor motor

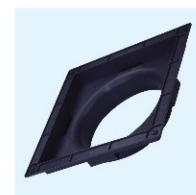
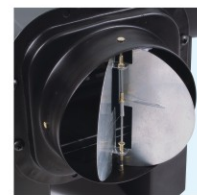
### EASY INSTALLATION

- inlet and outlet are the same size for easy connection to a ducted system
- can be installed on the wall, floor and ceiling
- various installation patterns

WIDE RANGE OF AIR VOLUME AND AIR PRESSURE FOR SELECTION



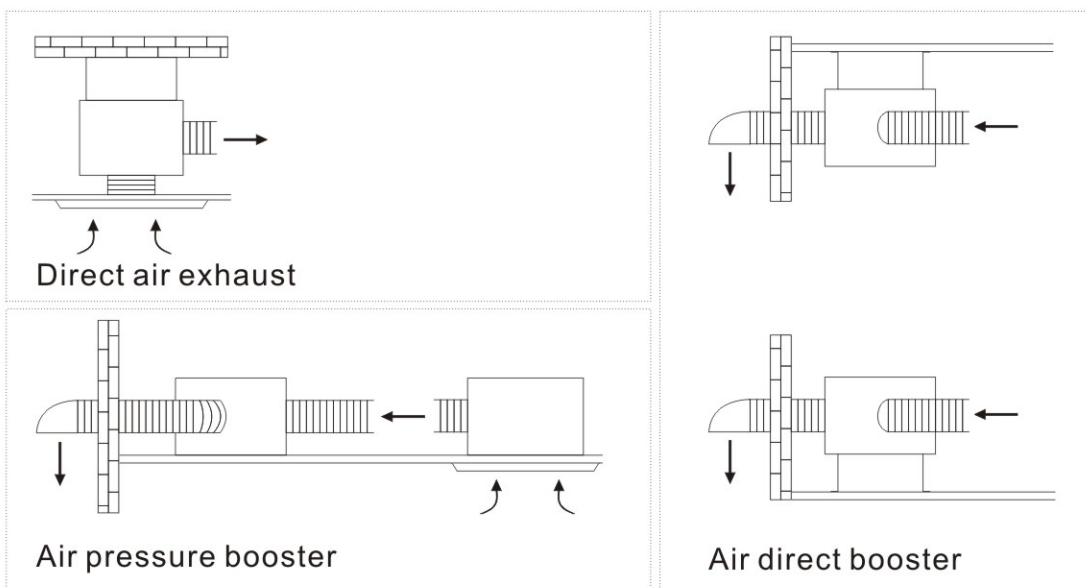
### BACK DRAFT SHUTTER



### SPIGOT (OPTIONAL)

# FULL METAL IN-LINE FAN

## MULTI-FUNCTION



## VARIOUS INSTALLATION PATTERNS

- well designed to satisfy different installation space, location and adjustable outlet direction to fit vertical or horizontal position

