

# Full METAL IN-LINE FAN

## ■ PRODUCT ■ DESCRIPTION ■ SPECIFICATIONS



### CASING

- Rust-resistance Pre-galvanized steel
- High performance and low sound level designed inlet guide vane

### MOTOR

- Unique design external rotor motor
- Optional speed control

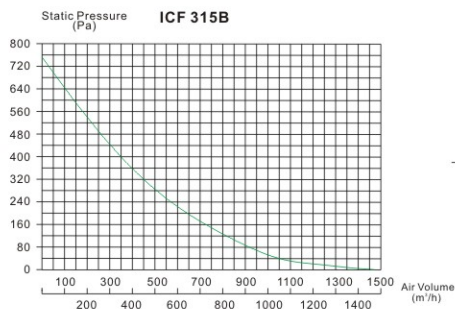
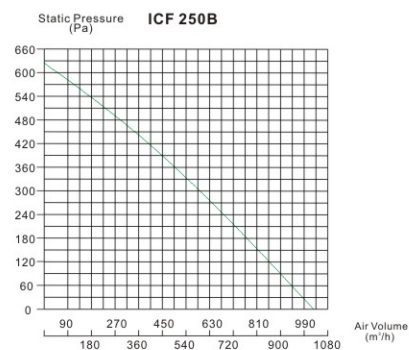
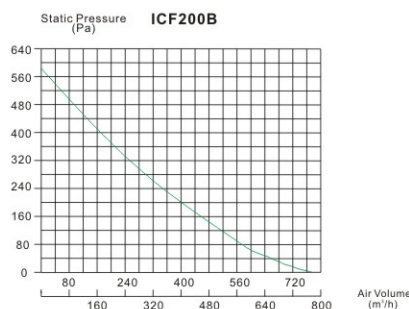
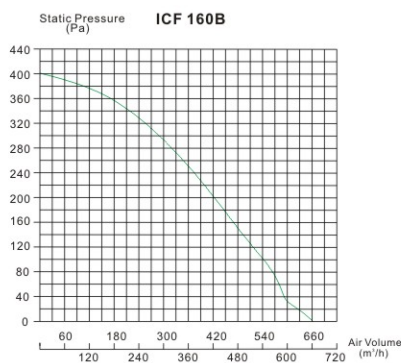
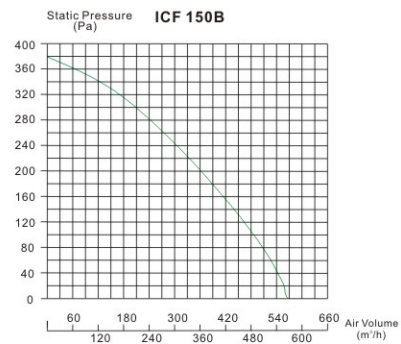
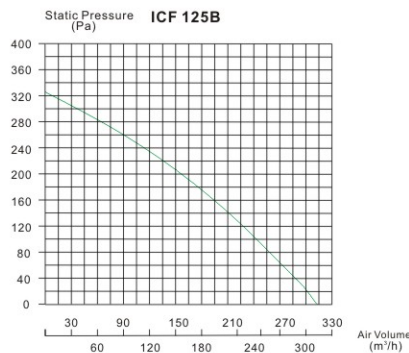
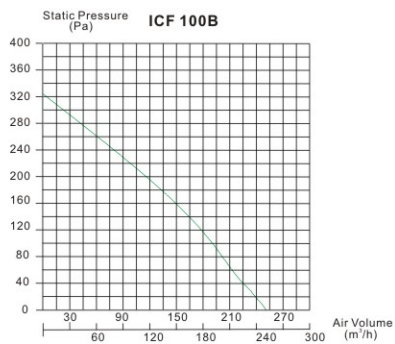
### IMPELLERS

- Backward curve centrifugal

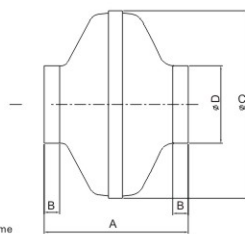
Model	Outlet Size mm	Volt/Hz	Input Power W	Speed R.P.M.	Air Volume m <sup>3</sup> /h	Air Pressure Pa	Sound Level dB(A)	Blade Material
ICF100B	100	240/50	66	2400	252	324	47	Plastic
ICF125B	125	240/50	84	2450	312	326	47	
ICF150B	150	240/50	87	2450	570	379	51	
ICF160B	160	240/50	131	2750	660	402	51	
ICF200B	200	240/50	137	2650	780	583	54	Metal
ICF250B	250	240/50	161	2600	1026	625	53	
ICF315B	315	240/50	225	2450	1476	750	61	

IN LINE CENTRIFUGAL FAN

## ■ PERFORMANCE CURVE



## ■ DIMENSIONS(mm)



Model	A	B	C	D
ICF100B	194	23	243	100
ICF125B	195	27	243	125
ICF150B	222	23	333	150
ICF160B	222	25	333	160
ICF200B	223	24	333	200
ICF250B	206	27	333	250
ICF315B	230	25	401	315