

# SUPER SLIM RANGE

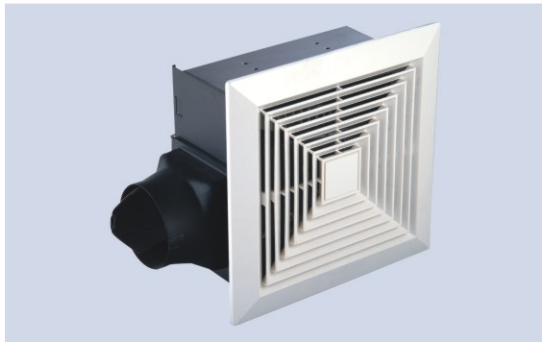
## ■ PRODUCT



TUB215  
FULL METAL



TUB18M  
FULL METAL



TUB18  
PLASTIC SIROCCO FAN VANE



TUB25  
PLASTIC SIROCCO FAN VANE

# SUPER SLIM RANGE

## ■ DESCRIPTION

- The fans are specially designed with super slim casing and compact structure for limited ceiling space installation



TUB215



TUB18M



TUB18  
TUB25

### CASING

- super slim compact design of 125-135mm thickness for small installation space
- welding joint design for durable and aesthetical needs
- fire retardant full metal construction and anti-rust coating processed

### METAL SIROCCO FAN (TUB215, TUB18M)

- well balanced, high graded aluminum high pressure forward curved centrifugal fan
- quiet and stable operation

### MOTOR

- capacitor run induction motor with lower input power, high performance, long durability and reliability

### DETACHABLE CASSETTE TYPE DISCHARGE OPENING

- convenient for ducting, installation and maintenance

### LOUVER

- various aesthetically pleasing design for selection
- easy to install / remove clips  
(Refer to Page 39 & Page 40 louver selection for tubular sirocco fan)

### MOUNTING FEET

- for easy suspending and ceiling installation

### BACK DRAFT SHUTTER

### PLASTIC SIROCCO FAN (TUB18, TUB25)

- well balanced plastic forward curved centrifugal fan
- quiet and stable operation