

# INDUSTRIAL SERIES

## ■ PRODUCT

### TOTALLY ENCLOSED MOTOR SERIES



FE6-60D



FE6-75D



FE6-90D3

### OPEN MOTOR SERIES



FE-30D



FE-40D



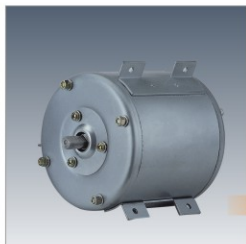
FE-60D



FE-75D / FE-90D3

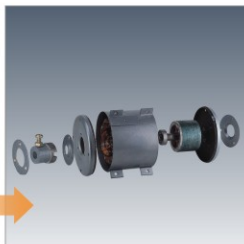
## DESCRIPTION

- Wide range of sizes for different application requirement 300mm, 400mm, 450mm, 500mm, 600mm, 750mm, 900mm



TOTALLY ENCLOSED MOTOR

- totally enclosed motor, dust proof for tough operating environment



OPEN MOTOR

- open motor for general indoor application



TRI-ARMS MOTOR SUPPORT

- well balanced for stable operation

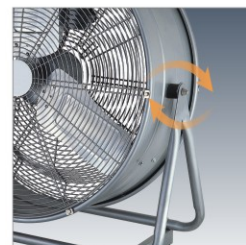


EASY-TO-CARRY HANDLE & WHEELS



IMPELLERS

- made from aluminum with epoxy paint coating
- well balanced and powerful pitch angle with high velocity



ADJUSTABLE TILT ANGLE



SINGLE SPEED SWITCH / 3-SPEED CONTROLLER

